

# Tri-Series

## Entrance Systems

---

# 175 Tri-Series

## Standard Entrance

TriView Glass and Aluminum Inc.



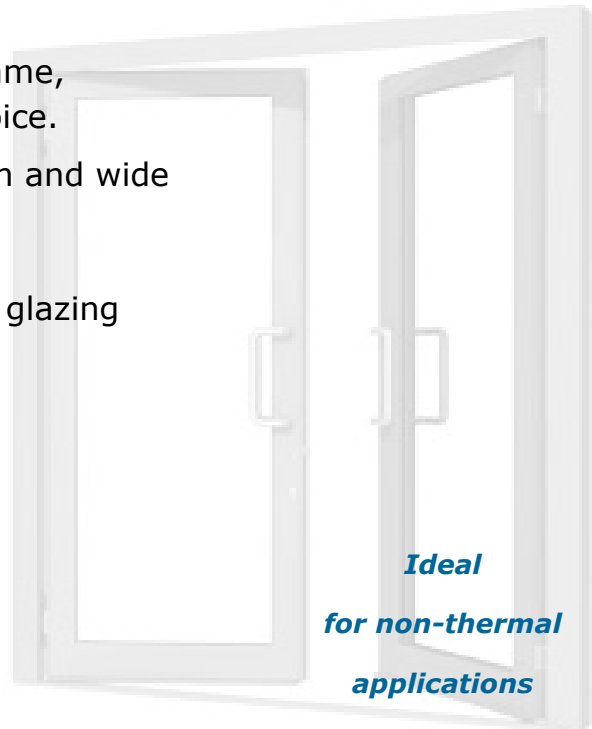
### Versatile design

- ◆ Chose from: door only, door with frame, or door with glazing infill of your choice.
- ◆ Available in 3 stiles: narrow, medium and wide
- ◆ Standard or custom colors
- ◆ Customize your: size, hardware and glazing

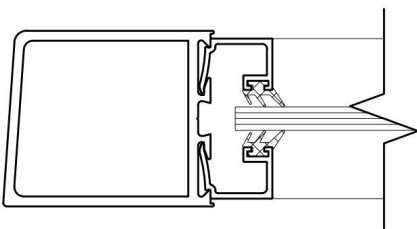


### Built to last

- ◆ Dual welded corner construction
- ◆ Latest technology welding
- ◆ Quality extrusions and hardware



*Ideal  
for non-thermal  
applications*



*Fabricated from genuine Alumicor extrusions,  
and built to Alumicor's strict specifications*

---

Fabricated in our local warehouse using state of the art technology,  
your entrance is made to your custom specifications.

Available locally for pick-up, install or delivery within Canada

# 175 Tri-Series

## Standard Entrance

TriView Glass and Aluminum Inc.

Strong. Durable. Elegant. Affordable.

With various colors, glazing, framing and hardware options, this versatile door is guaranteed to suit most non-thermal applications.

### Standard Features :

- Doors are 1 3/4" (44.5mm) deep
  - Chose from clear, black or bronze anodized
  - Available in narrow, medium and wide stiles
  - 1/4" (6mm) or 1" (25mm) glazing infill
  - Standard or heavy duty butt hinge
  - Single or double acting
  - Latest technology welding
  - Standard hardware options include:
    - MS lock with thumbturn
    - D pulls or push/pull handle/bar options
    - Surface mounted closers
- In-stock options: Panic exit device, overhead stop, electric strike, continuous hinge

### Additional features available :

- Additional color options
- Cladding to create split finish, or increase thermal properties
- Additional glazing infill options
- Offset or intermediate pivot
- Mid rail options available
- Specialty hardware

Quality entrance systems, built with integrity

Shipping within Canada, or ask us about install services within southern Alberta



Quote Requests [www.triview.ca/doors](http://www.triview.ca/doors)

Phone: 403-735-6363

Email: [doors@triview.ca](mailto:doors@triview.ca)

Web: [www.triview.ca](http://www.triview.ca)

# 175 Tri-Series

## Standard Entrance

---

TriView Glass and Aluminum Inc.

Whether for a large project or a single entrance, Tri-Series entrance systems offers a choice of aesthetic and fitting options

Choose from standard sizes below, or custom sized rails and/or stiles

---

### N a r r o w

2 1/8" [54mm] vertical stile, 2 1/8" [54mm] top, 3 7/8" [98.4mm] bottom rail

**Moderate Use:** common applications include small business, storefronts, and apartment buildings

---

### M e d i u m

4" [101.6mm] vertical stile, 3 7/8" [98mm] top, 7" [177.8 mm] bottom rail

**Intense use:** common applications include high traffic areas, schools and hospitals

---

### W i d e

5 3/4" [146.1mm] vertical stile, 5 5/8" [142.9mm] top, 7" [177.8mm] bottom rail

**Extreme or Luxury Use:** common applications include luxury hotel buildings, banks and museums

Extra Wide and Custom Sizes Available

---

Choose from: door only / door with frame / door with glazing infill of your choice

Available locally for pick-up, install or delivery within Canada

Our 175 Tri-Series is engineered, constructed and tested to meet or exceed leading door manufacturer standards



**Quote Requests** [www.triview.ca/doors](http://www.triview.ca/doors)

Phone: 403-735-6363

Email: [doors@triview.ca](mailto:doors@triview.ca)

Web: [www.triview.ca](http://www.triview.ca)